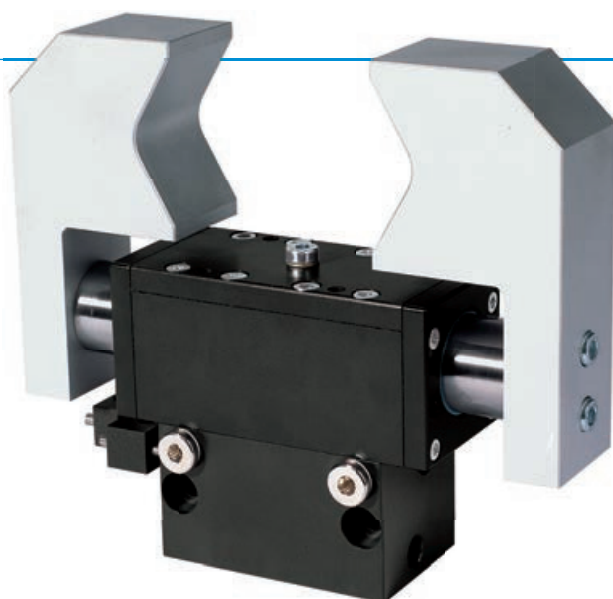


2-JAW PARALLEL GRIPPERS

SERIES GP1200

▶ PRODUCT ADVANTAGES



“The flexible”

▶ Smooth stroke configuration

An adjusting screw allows you to adjust the stroke to your specific application

▶ Integrated check valve

Lowers the amount of piping required and the interference contours

▶ Sealed guide

Using the double scrapers on the guides, you can reliably use the gripper even under the harshest conditions

▶ THE BEST PRODUCT FOR YOUR APPLICATION



▶ Our products love the challenge!

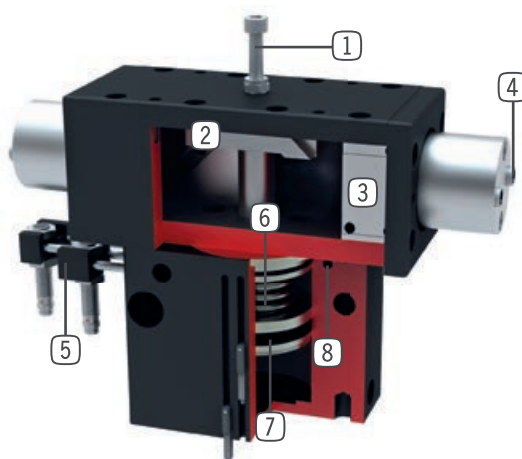
Extreme conditions, all over the world—our tried and tested components and systems give you limitless possibilities:

Find the best product for your specific use:

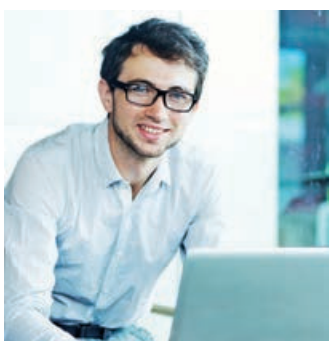
www.zimmer-group.de

► BENEFITS IN DETAIL

- ① **Stroke adjustment**
 - Infinitely adjustable opening stroke
 - adjusting screw in delivery
- ② **Wedge hook mechanism**
 - synchronized the movement of the gripper jaws
 - high force transfer
- ③ **Sealed flat guide**
 - high forces and moments capacity
- ④ **Removable centering sleeves**
 - quick and economical positioning of the gripper fingers
- ⑤ **Adjustable mounting block**
 - mounting for inductive proximity switch
- ⑥ **Integrated gripping force safety device**
 - spring integrated into cylinder as energy storage
- ⑦ **Drive**
 - double-acting pneumatic cylinder
- ⑧ **Energy supply**
 - possible from several sides



► FURTHER INFORMATION IS AVAILABLE ONLINE



► Technical Information

All information just a click away at: www.zimmer-group.de
Find data, illustrations, 3D models and Installation instructions for your installation size using the order number for your desired product.
Quick, clear and always current.



2-JAW PARALLEL GRIPPERS

SERIES GP1200

1

Grippers

pneumatic

2-Jaw Parallel Grippers

GP1200

GP1200

GP1200

GP1200

GP1200

GP1200

GP1200

GP1200

GP1200

GP1200

GP1200

GP1200

GP1200

GP1200

GP1200

GP1200

GP1200

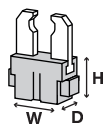
GP1200

GP1200

GP1200

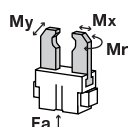
GP1200

Installation Size: GP1224



Dimension

Width [mm]	Height * [mm]	Depth [mm]
72	74	32



Force and moment

Mr [Nm]	Mx [Nm]	My [Nm]	Fa [N]
8	15	8	250

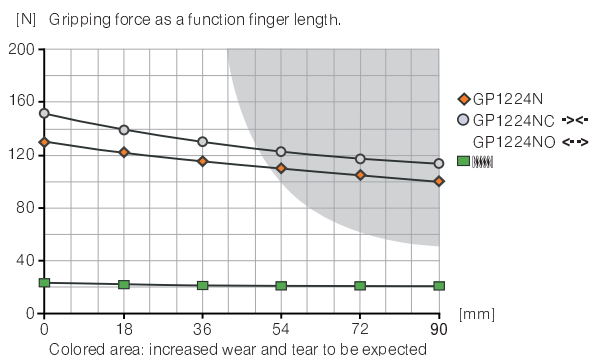
Technical Data*

Order no.	Stroke per jaw [mm]	Gripping force [N]		Weight [kg]
		opening	closing	
GP1224N	12	130	130	0.48
GP1224NC	12		155	0.55
GP1224NO	12	155		0.5

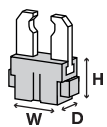
*All data measured at 6 bar

**Version with gripping force protection (NC, NO)

Gripping force diagram

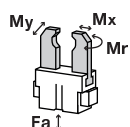


Installation Size: GP1240



Dimension

Width [mm]	Height * [mm]	Depth [mm]
110	118	49.4



Force and moment

Mr [Nm]	Mx [Nm]	My [Nm]	Fa [N]
18	30	15	400

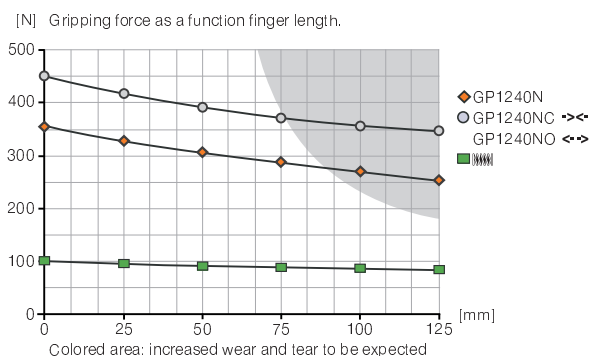
Technical Data*

Order no.	Stroke per jaw [mm]	Gripping force [N]		Weight [kg]
		opening	closing	
GP1240N	20	365	365	1.7
GP1240NC	20		465	1.9
GP1240NO	20	465		1.9

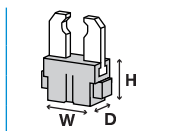
*All data measured at 6 bar

**Version with gripping force protection (NC, NO)

Gripping force diagram

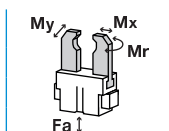


Installation Size: GP1260



► Dimension

Width [mm]	Height ** [mm]	Depth [mm]
150	148	64



► Force and moment

Mr [Nm]	Mx [Nm]	My [Nm]	Fa [N]
25	45	25	600

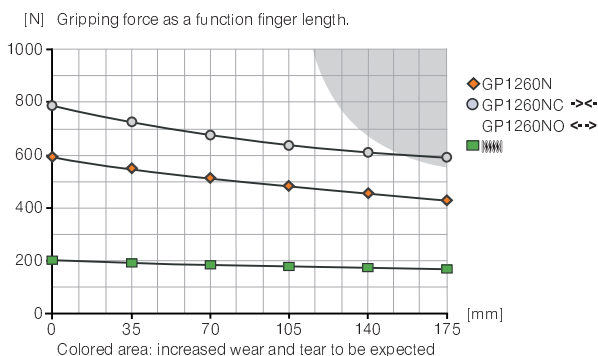
► Technical Data*

Order no.	Stroke per jaw [mm]	Gripping force [N]		Weight [kg]
		opening	closing	
GP1260N	30	580	580	3.9
GP1260NC	30		780	4.2
GP1260NO	30	780		4.2

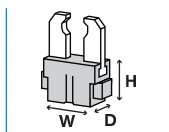
* All data measured at 6 bar

** Version with gripping force protection (NC, NO)

► Gripping force diagram

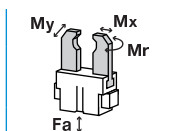


Installation Size: GP1280



► Dimension

Width [mm]	Height ** [mm]	Depth [mm]
210	204	86



► Force and moment

Mr [Nm]	Mx [Nm]	My [Nm]	Fa [N]
40	75	40	1000

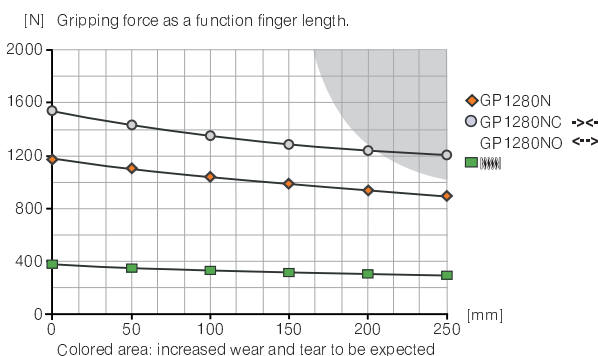
► Technical Data*

Order no.	Stroke per jaw [mm]	Gripping force [N]		Weight [kg]
		opening	closing	
GP1280N	40	1160	1160	9.4
GP1280NC	40		1550	10.5
GP1280NO	40	1550		10.5

* All data measured at 6 bar

** Version with gripping force protection (NC, NO)

► Gripping force diagram

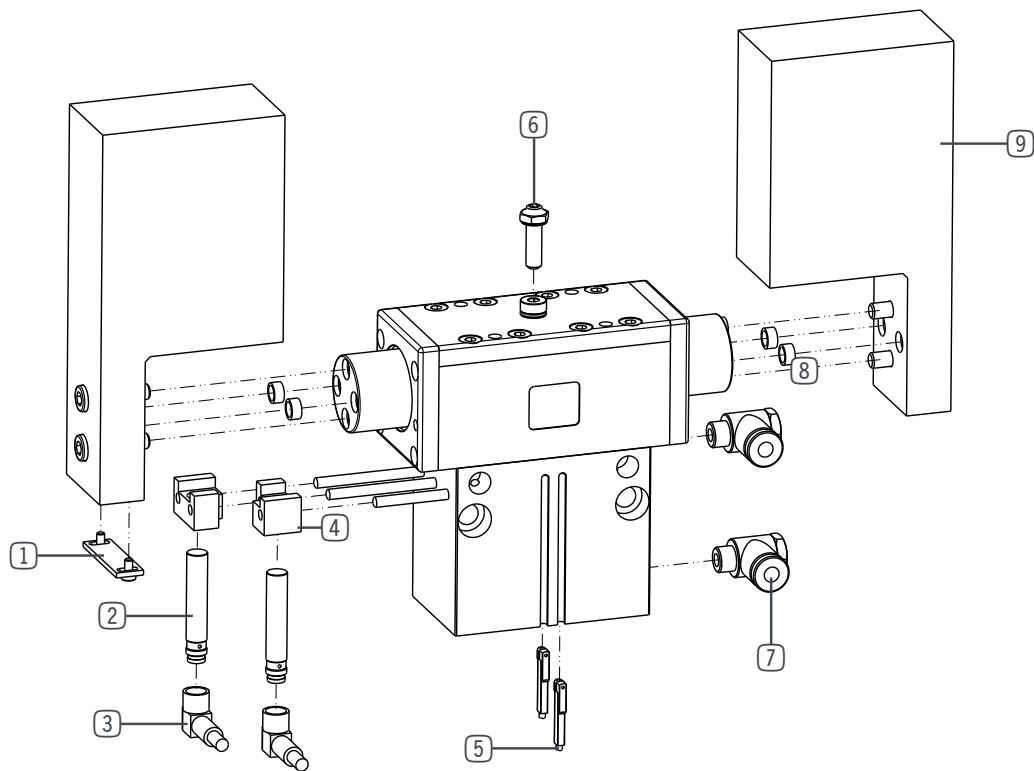


2-JAW PARALLEL GRIPPERS

SERIES GP1200

1

► ACCESSORIES



► Installation Size: GP1224

Pos.	Accessories	Order no.
②	Inductive proximity switch - Connector M8	NJ6.5-E2S
②	Inductive proximity switch - Cable 5 m	NJ6.5-E2-01
③	Plug-in connector Straight Cable 5m - Socket M8 (female)	KAG500
③	Plug-in connector Angled Cable 5m - Socket M8 (female)	KAW500
⑤	Magnetic field sensor Angled Cable 5 m	MFS103KHC
⑤	Magnetic field sensor Angled Cable 0,3 m - Connector M8	MFS103SKHC
⑤	Magnetic field sensor Straight Cable 5 m	MFS204KHC
⑤	Magnetic field sensor Straight Cable 0,3 m - Connector M8	MFS204SKHC
⑦	Straight Fittings - Quick Connect Style	GVM5
⑨	Universal Jaw Aluminium	UB1224
⑨	Universal Jaw Steel	UB1224ST
	Quick Exhaust Valve	DEV04
	Pressure Safety Valve	DSV1-8
	Plug-in connector customizable Straight - Connector M8	S8-G-3
	Plug-in connector customizable Straight - Connector M12	S12-G-3
	Delivery contents	Order no.
①	Switch cam + screws	SN0005
④	Mounting block	KB6.5-01
⑥	Stroke adjustment screw	HES0004
⑧	Centering Disc	BDST40600

► Installation Size: GP1240

Pos.	Accessories	Order no.
②	Inductive proximity switch - Cable 5 m	NJ8-E2
②	Inductive proximity switch - Connector M8	NJ8-E2S
③	Plug-in connector Straight Cable 5m - Socket M8 (female)	KAG500
③	Plug-in connector Angled Cable 5m - Socket M8 (female)	KAW500
⑤	Magnetic field sensor Angled Cable 5 m	MFS103KHC
⑤	Magnetic field sensor Angled Cable 0,3 m - Connector M8	MFS103SKHC
⑤	Magnetic field sensor Straight Cable 5 m	MFS204KHC
⑤	Magnetic field sensor Straight Cable 0,3 m - Connector M8	MFS204SKHC
⑦	Straight Fittings - Quick Connect Style	GV1-8X6
⑨	Universal Jaw Aluminium	UB1240
⑨	Universal Jaw Steel	UB1240ST
	Quick Exhaust Valve	DEV06
	Pressure Safety Valve	DSV1-8
	Plug-in connector customizable Straight - Connector M8	S8-G-3
	Plug-in connector customizable Straight - Connector M12	S12-G-3
	Delivery contents	Order no.
①	Switch cam + screws	SN0006
④	Mounting block	KB8-07
⑥	Stroke adjustment screw	HES0005
⑧	Centering Disc	BDST40800

► Installation Size: **GP1260**

Pos.	Accessories	Order no.
②	Inductive proximity switch - Cable 5 m	NJ8-E2
②	Inductive proximity switch - Connector M8	NJ8-E2S
③	Plug-in connector Straight Cable 5m - Socket M8 (female)	KAG500
③	Plug-in connector Angled Cable 5m - Socket M8 (female)	KAW500
⑤	Magnetic field sensor Angled Cable 5 m	MFS103KHC
⑤	Magnetic field sensor Angled Cable 0,3 m - Connector M8	MFS103SKHC
⑤	Magnetic field sensor Straight Cable 5 m	MFS204KHC
⑤	Magnetic field sensor Straight Cable 0,3 m - Connector M8	MFS204SKHC
⑦	Straight Fittings - Quick Connect Style	GV1-8X8
⑨	Universal Jaw Aluminium	UB1260
⑨	Universal Jaw Steel	UB1260ST
	Quick Exhaust Valve	DEV08
	Pressure Safety Valve	DSV1-8
	Plug-in connector customizable Straight - Connector M8	S8-G-3
	Plug-in connector customizable Straight - Connector M12	S12-G-3
Delivery contents		Order no.
①	Switch cam + screws	SN0007
④	Mounting block	KB8-07
⑥	Stroke adjustment screw	HES0005
⑧	Centering Disc	BDST40800

► Installation Size: **GP1280**

Pos.	Accessories	Order no.
②	Inductive proximity switch - Cable 5 m	NJ8-E2
②	Inductive proximity switch - Connector M8	NJ8-E2S
③	Plug-in connector Straight Cable 5m - Socket M8 (female)	KAG500
③	Plug-in connector Angled Cable 5m - Socket M8 (female)	KAW500
⑤	Magnetic field sensor Angled Cable 5 m	MFS103KHC
⑤	Magnetic field sensor Angled Cable 0,3 m - Connector M8	MFS103SKHC
⑤	Magnetic field sensor Straight Cable 5 m	MFS204KHC
⑤	Magnetic field sensor Straight Cable 0,3 m - Connector M8	MFS204SKHC
⑦	Straight Fittings - Quick Connect Style	GV1-8X8
⑨	Universal Jaw Aluminium	UB1280
⑨	Universal Jaw Steel	UB1280ST
	Quick Exhaust Valve	DEV08
	Pressure Safety Valve	DSV1-8
	Plug-in connector customizable Straight - Connector M8	S8-G-3
	Plug-in connector customizable Straight - Connector M12	S12-G-3
Delivery contents		Order no.
①	Switch cam + screws	SN0007
④	Mounting block	KB8-07
⑥	Stroke adjustment screw	HES0014
⑧	Centering Disc	BDST41600