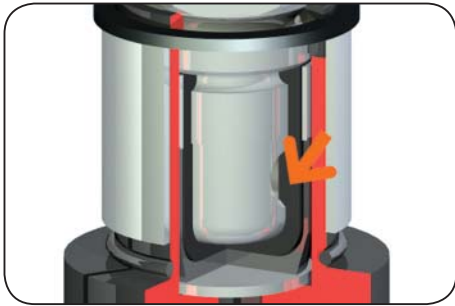


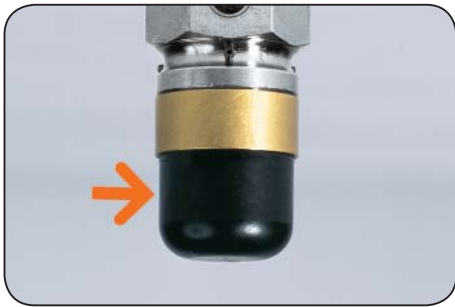
## Highlights



### Drive

#### Single effect rubber membrane

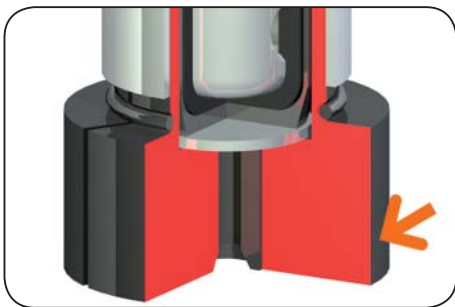
- Steering effort low
- Only one pneumatic line required



### Force transfer

#### Via rubber membrane

- Direct
- Loss free



### Collet chuck

#### In 16 MnCr5

- Can be machined individually
- Possible hole diameter from 4 to 50 mm
- Length from 9 to 35 mm



### Energy feed

#### Axial and radial

- Flexible integration into the machine
- Individual installation of pneumatic line

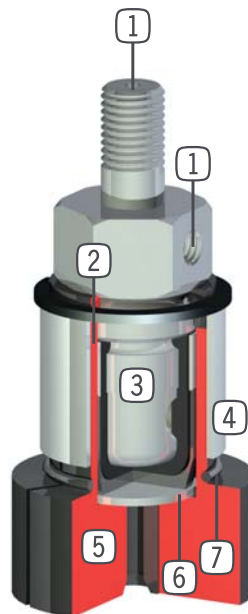


## Terms

Gripping force:	arithmetic sum of the individual forces occurring at the jaws
Closing-/opening time:	time required by the gripping jaws to travel the entire stroke distance
Repeatability:	dispersion of stop positions at 50/100 consecutive cycles/strokes
Cycle:	distance covered by the membrane in one open and close movement
Maintenance:	maintenance free (please see the owner's manual for conditions, download from <a href="http://www.sommer-automatic.com">www.sommer-automatic.com</a> )

## Design

- |                                                                                                                                                  |                                                                                                                                                   |
|--------------------------------------------------------------------------------------------------------------------------------------------------|---------------------------------------------------------------------------------------------------------------------------------------------------|
| <p><b>1 Energy feed</b><br/>- axial and Radial possible</p> <p><b>2 Protective membrane</b><br/>- between collet chuck and function membrane</p> | <p><b>5 Collet chuck</b><br/>- for individual machining</p> <p><b>6 Steel protective cover</b><br/>- protects the membrane against puncturing</p> |
|--------------------------------------------------------------------------------------------------------------------------------------------------|---------------------------------------------------------------------------------------------------------------------------------------------------|



- |                                                                                                                                                                           |                                                                                  |
|---------------------------------------------------------------------------------------------------------------------------------------------------------------------------|----------------------------------------------------------------------------------|
| <p><b>3 Direct drive with membrane</b><br/>- only one pneumatic line required</p> <p><b>4 Stroke limit</b><br/>- prevents damage by overstretching with empty strokes</p> | <p><b>7 O-ring for backstroke</b><br/>- gripper close movement after venting</p> |
|---------------------------------------------------------------------------------------------------------------------------------------------------------------------------|----------------------------------------------------------------------------------|

# Grippers for Specific Tasks: Interior Gripper



Picture shows LG4-20

## Included with purchase



Collet chuck  
Order no.: **BDST04200**



Collet chuck  
Order no.: **BDST04201**

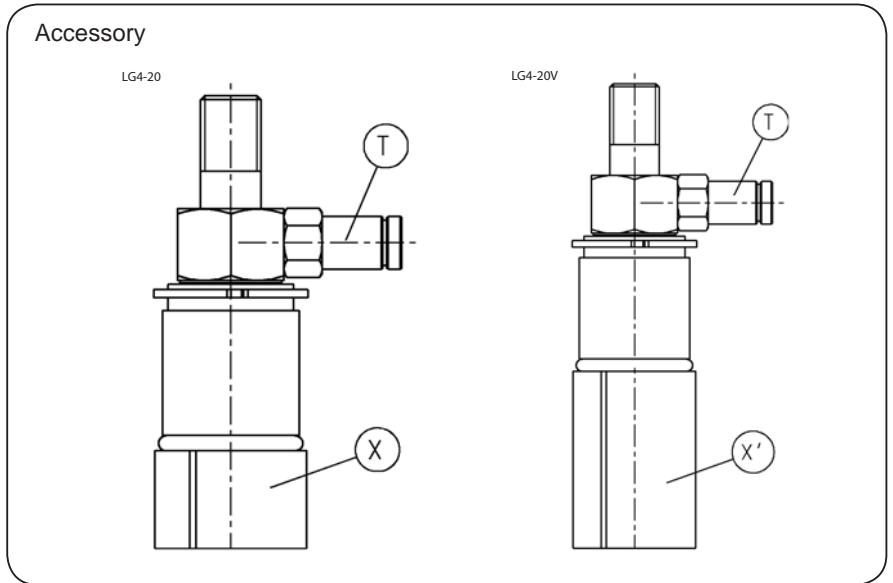
## Recommended accessories



Pneumatic fittings  
Order no.: **GVM5**



Pneumatic fittings  
Order no.: **WVM5**

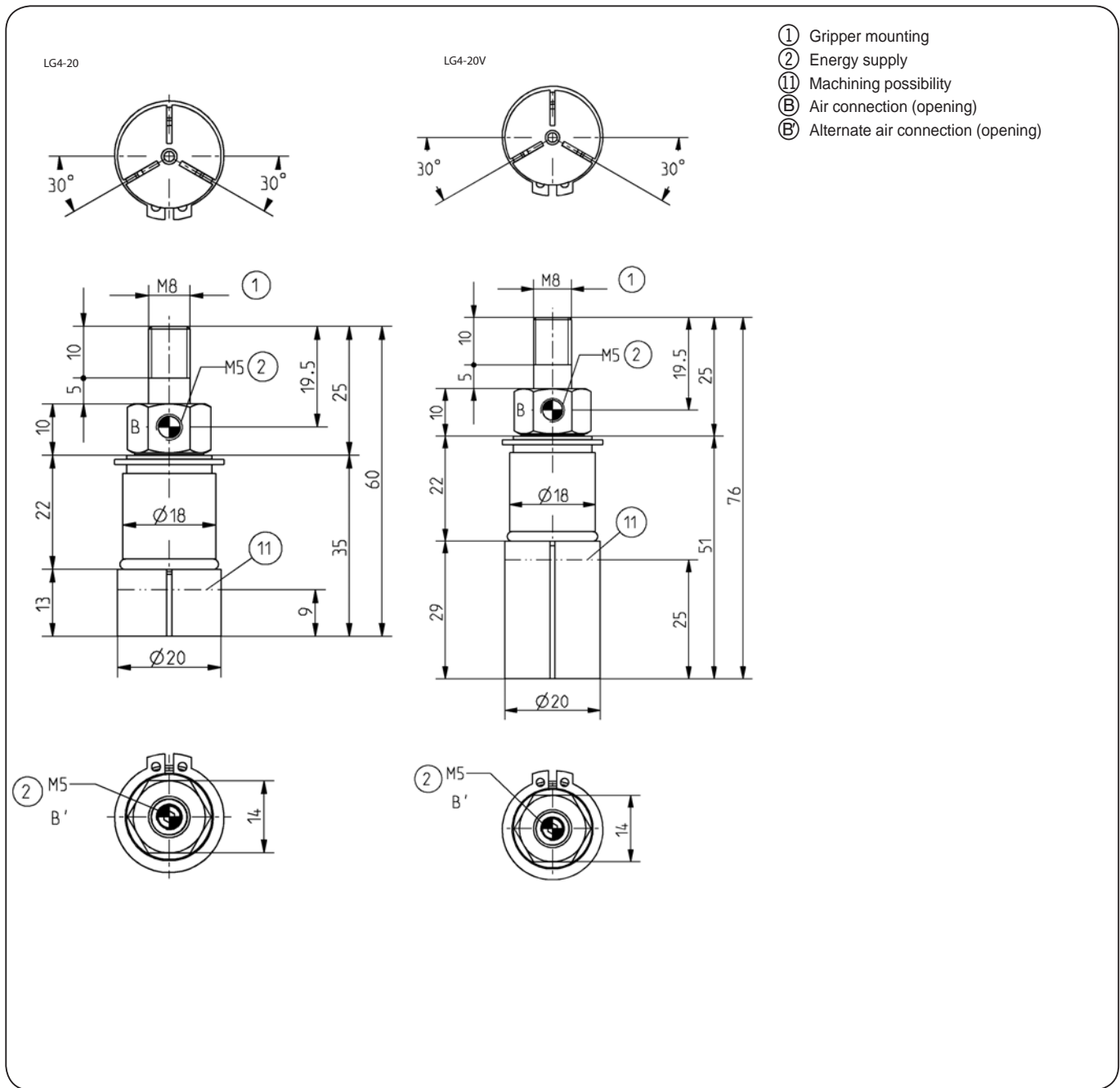


Subject to change without prior notice

Order no.:	LG4-20	LG4-20V
Total stroke in Ø [mm]:	1	1
Gripping force diameter min. [mm]:	4	4
Gripping torque in opening [Nm]:	0,5	0,5
Closing time / opening time [s]:	0,1	0,1
Min. operating pressure [bar]:	4	4
Max. operating pressure [bar]:	6	6
Operating temperaturee [°C]*:	5-60 °C	5-60 °C
Air volume per cycle [cm³]:	1	1
Weight [kg]:	0,075	0,115
(11) Possible length for machining [mm]:	9	25

All data measured at 6 bar

\* High-temperature-resistant model (up to 150°) add T to part number



Subject to change without prior notice

# Grippers for Specific Tasks: Interior Gripper



Picture shows LG20-30

## Included with purchase



Collet chuck  
Order no.: **BDST20300**



Collet chuck  
Order no.: **BDST20301**

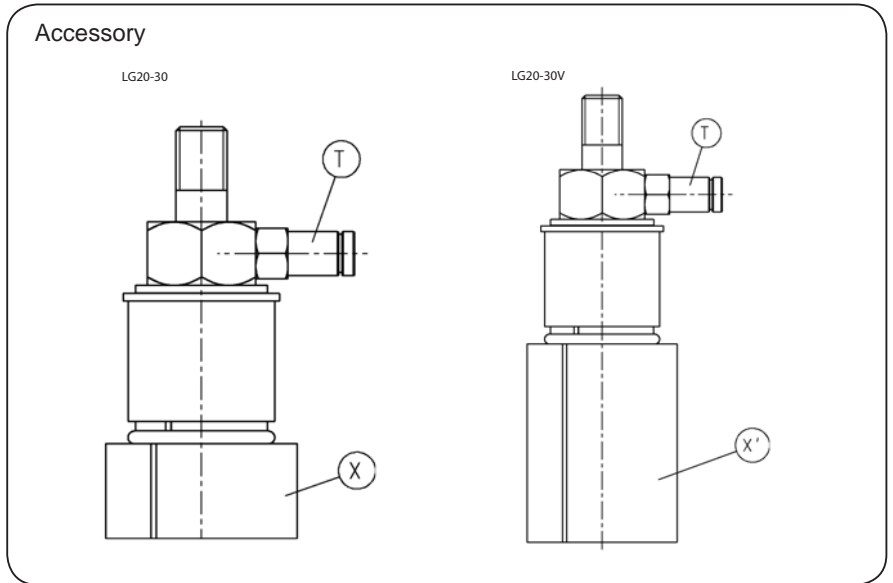
## Recommended accessories



Pneumatic fittings  
Order no.: **GVM5**



Pneumatic fittings  
Order no.: **WVM5**

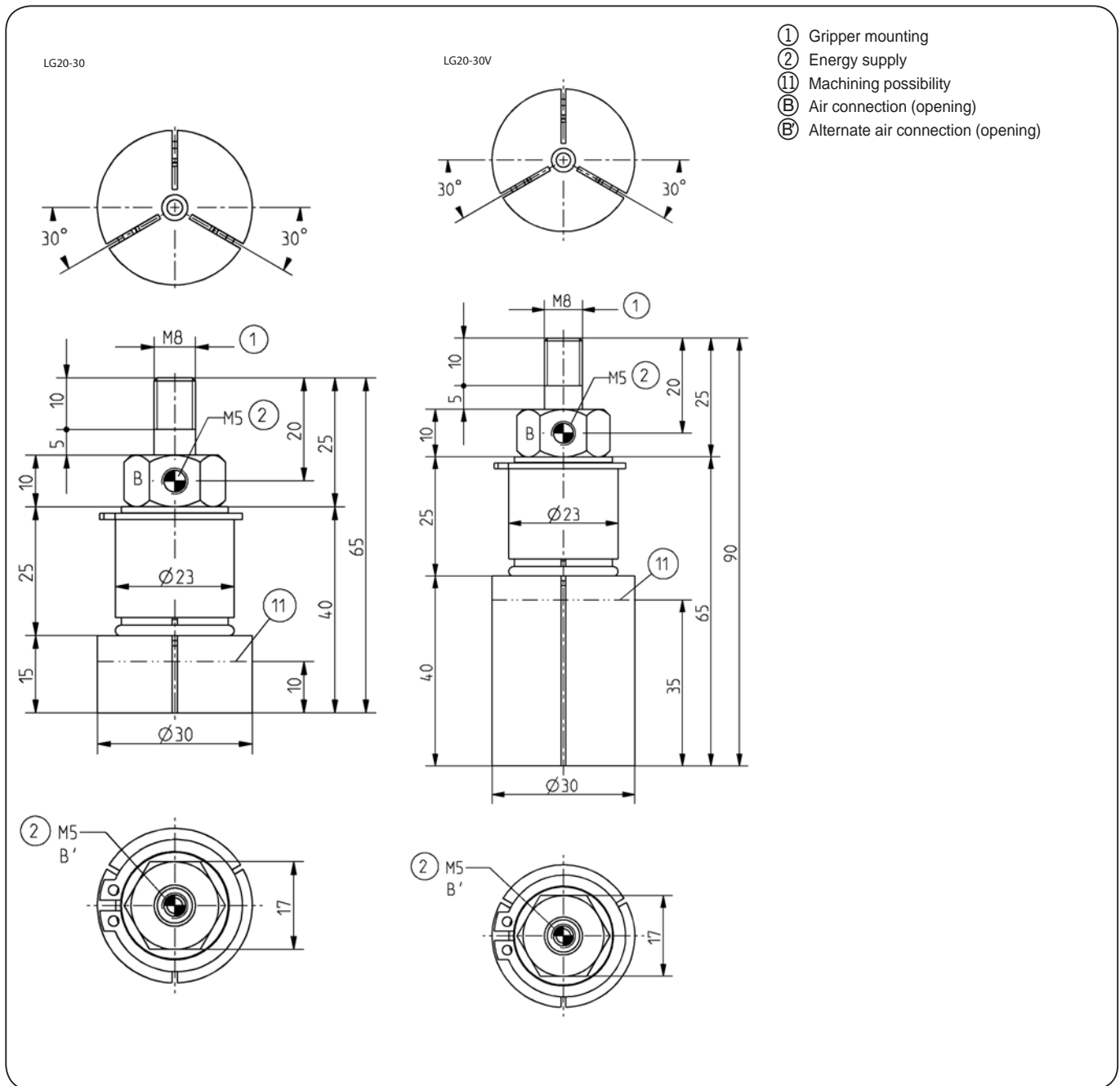


Subject to change without prior notice

Order no.:	LG20-30	LG20-30V
Total stroke in Ø [mm]:	1	1
Gripping force diameter min. [mm]:	5	5
Gripping torque in opening [Nm]:	2	2
Closing time / opening time [s]:	0,1	0,1
Min. operating pressure [bar]:	4	4
Max. operating pressure [bar]:	6	6
Operating temperaturee [°C]*:	5-60 °C	5-60 °C
Air volume per cycle [cm³]:	3	3
Weight [kg]:	0,160	0,290
(11) Possible length for machining [mm]:	10	35

All data measured at 6 bar

\* High-temperature-resistant model (up to 150°) add T to part number



Subject to change without prior notice

# Grippers for Specific Tasks: Interior Gripper



Picture shows LG30-50

## Included with purchase



Collet chuck  
Order no.: **BDST30500**

## Recommended accessories

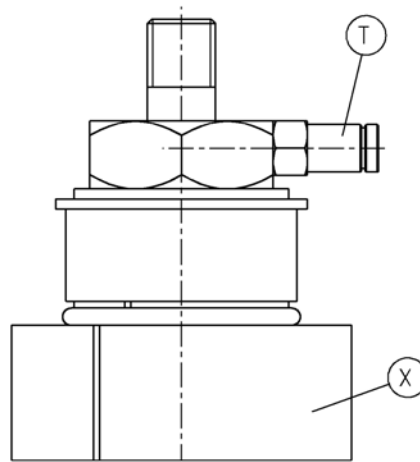


Pneumatic fittings  
Order no.: **GVM5**



Pneumatic fittings  
Order no.: **WVM5**

## Accessory

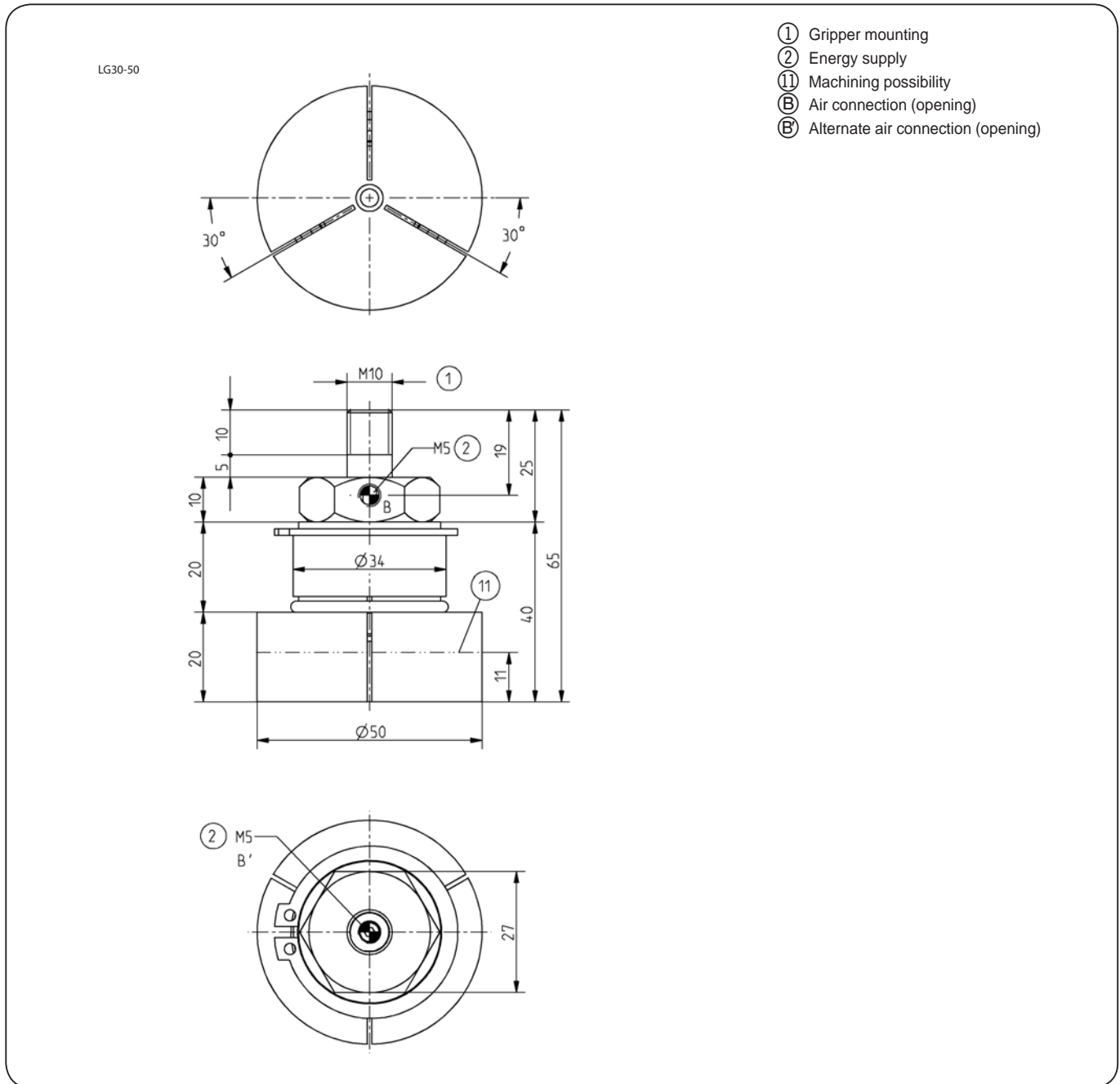


Subject to change without prior notice

Order no.:	LG30-50
Total stroke in Ø [mm]:	1
Gripping force diameter min. [mm]:	6
Gripping torque in opening [Nm]:	3
Closing time / opening time [s]:	0,1
Min. operating pressure [bar]:	4
Max. operating pressure [bar]:	6
Operating temperaturee [°C]*:	5-60 °C
Air volume per cycle [cm³]:	5
Weight [kg]:	0,460
(11) Possible length for machining [mm]:	11

All data measured at 6 bar

\* High-temperature-resistant model (up to 150°) add T to part number



Subject to change without prior notice