

GRIPPERS FOR SPECIFIC TASKS

SERIES OVERVIEW

1

Grippers for Specific Tasks / Electrical / Grippers



GRIPPERS FOR SPECIFIC TASKS

ELECTRICAL

► FURTHER INFORMATION on page 298

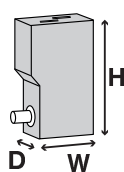
WORKING CONDITIONS

FUNCTIONALITY

PRICE

| | | | | | | | |
|----------------|---|---|---|---|---|---|---|
| Series GEN9100 |  | clean | dirty | - | + | + | ++ |
| | |  |  |  |  |  |  |

- Plug and Play
- Saving energy with pulse control
- Stepless stroke adjustment



► Technical Data

| Installation size | Needle stroke adjustable [mm] | | Pulse time [ms] | | Weight [kg] | |
|-------------------|-------------------------------|----|-----------------|-----------|-------------|------|
| | from | to | in retract | in extend | from | to |
| GEN9102 | 0 | 2 | 20 | 25 | 0,33 | 0,33 |

► Dimension



| Installation size | Width [mm] | Height [mm] | Depth [mm] |
|-------------------|------------|-------------|------------|
| GEN9102 | 40 | 110 | 27 |

► FURTHER INFORMATION on page 302

WORKING CONDITIONS

FUNCTIONALITY

PRICE

| | | | | | | | |
|----------------|---|---|---|---|---|---|---|
| Series HEM1000 |  | clean | dirty | - | + | + | ++ |
| | |  |  |  |  |  |  |

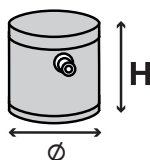
- Plug and Play
- Saving energy with pulse control
- Secure hold during EMERGENCY STOP

► Technical Data

| Installation size | Holding force max. [N] | | Minimum thickness [mm] | | Weight [kg] | |
|-------------------|------------------------|-----|------------------------|-----|-------------|------|
| | from | to | from | to | from | to |
| HEM1030 | 40 | 40 | 2,5 | 2,5 | 0,09 | 0,09 |
| HEM1042 | 160 | 160 | 3 | 3 | 0,28 | 0,28 |
| HEM1062 | 420 | 420 | 4,5 | 4,5 | 0,66 | 0,66 |
| HEM1080 | 720 | 720 | 6 | 6 | 1,3 | 1,3 |

► Dimension

| Installation size | Ø [mm] | Height [mm] |
|-------------------|--------|-------------|
| HEM1030 | 30 | 40,5 |
| HEM1042 | 42 | 45,5 |
| HEM1062 | 62 | 53 |
| HEM1080 | 80 | 69,5 |



GRIPPERS FOR SPECIFIC TASKS

SERIES GEN9100

▶ PRODUCT ADVANTAGES



SOMMER
automatic **S**

▶ Plug and Play

Reduce programming and assembly costs to a minimum with the integrated control system and the 2 position query

▶ Saving energy with pulse control

You only have to supply current briefly when retracting and extending the needles. No energy is required at the end positions

▶ Smooth stroke configuration

The needle stroke is displayed via a scale. You can smoothly adjust the needle stroke to fit your application

▶ THE BEST PRODUCT FOR YOUR APPLICATION



▶ Our products love the challenge!

Extreme conditions, all over the world—our tried and tested components and systems give you limitless possibilities:

Find the best product for your specific use:

www.zimmer-group.de

► BENEFITS IN DETAIL



- ① Energy supply**
 - standardized interface M12 round connector
- ② Drive**
 - via Pot magnet and coil bobbin according to the coil system principle
 - energy consumption only at impulse <20ms
- ③ Position sensing**
 - integrated Hallsensor
 - 2 positions monitorable
- ④ Status control**
 - optical LED position display
 - Needles retracted, needles extended
- ⑤ Stroke adjustment**
 - infinitely variable
 - Can be read off the scale
- ⑥ Mounting and positioning**
 - mounting possible from several sides for versatile positioning
- ⑦ Robust, lightweight housing**
 - hard coated aluminium alloy
- ⑧ Extending needles**
 - gripping by penetration

► FURTHER INFORMATION IS AVAILABLE ONLINE



► Technical Information

All information just a click away at: www.zimmer-group.de
Find data, illustrations, 3D models and Installation instructions for your installation size using the order number for your desired product.
Quick, clear and always current.

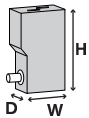


GRIPPERS FOR SPECIFIC TASKS

SERIES GEN9100

1

Installation Size: GEN9102



| Dimension | | |
|---------------|----------------|---------------|
| Width [mm] | Height [mm] | Depth [mm] |
| 40 | 110 | 27 |

| Technical Data | | | | |
|-------------------------------|------|--------|-----------------|-----------|
| needle stroke adjustable [mm] | | Weight | Pulse time [ms] | |
| min. | max. | [kg] | in retract | in extend |
| 0 | 2 | 0.33 | 20 | 25 |

Series ZUBBOX9000 BUSBOX



- ▶ Control via Profibus
- ▶ 4 actuators of the series GEP, GEN and VEE can be connected
- ▶ Intelligent Power Supply - IPC
- ▶ Power storage via condensers

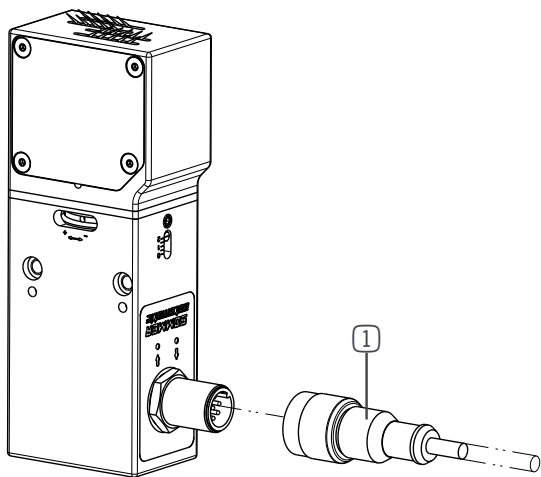
| Technical Data | |
|---------------------------------|---------------|
| Order no. | ZUBBOX9000-01 |
| Feldbus Typ | PROFIBUS |
| Width [mm] | 185 |
| Height [mm] | 88 |
| Depth [mm] | 105 |
| Actuator connectors | 4 |
| Signal voltage [V DC] | 24 |
| Load voltage [V DC] | 24 |
| Current feed min. [A] | 5 |
| Current feed max. [A] | 10 |
| Operating temperature min. [°C] | 0 |
| Operating temperature max. [°C] | +50 |
| Protection to IEC 60529 | IP64 |
| Certification | CE |
| Weight [kg] | 1,1 |

GRIPPERS FOR SPECIFIC TASKS

SERIES GEN9100

▶

ACCESSORIES



| ▶ Installation Size: GEN9102 | | |
|------------------------------|---|---------------|
| Pos. | Accessories | Order no. |
| ① | Plug-in Connector Straight Cable 10 m - Female M12 | KAG1000B8 |
| ① | Plug-in Connector Angled Cable 10 m - Female M12 | KAW1000B8 |
| | Busbox | ZUBBOX9000-01 |

GRIPPERS FOR SPECIFIC TASKS

SERIES HEM1000

▶ PRODUCT ADVANTAGES

SOMMER
automatic **S**



▶ Plug and Play

Reduce your installation effort to a minimum by using the single cable solution and the simple control system via plus and minus buttons

▶ Saving energy with pulse control

You only have to supply current briefly when releasing the workpiece; no energy is required when transporting the workpiece

▶ Secure hold during EMERGENCY STOP

The magnet provides full holding force when it is not powered, preventing the loss of the workpiece if there is a voltage drop

▶ THE BEST PRODUCT FOR YOUR APPLICATION



▶ Our products love the challenge!

Extreme conditions, all over the world—our tried and tested components and systems give you limitless possibilities:

Find the best product for your specific use:

www.zimmer-group.de

► BENEFITS IN DETAIL

① Mounting and positioning

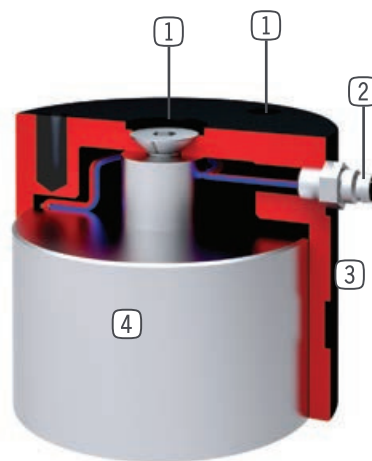
- via centering sleeve and thread

② Energy supply

- standardized interface M8 round plug

③ Robust, lightweight housing

- hard coated aluminium alloyHolding solenoidWith electrical switch off



► FURTHER INFORMATION IS AVAILABLE ONLINE



► Technical Information

All information just a click away at: www.zimmer-group.de

Find data, illustrations, 3D models and Installation instructions for your installation size using the order number for your desired product.

Quick, clear and always current.



GRIPPERS FOR SPECIFIC TASKS

SERIES HEM1000

1

Installation Size: **HEM1030**



► Dimension

| Ø | Height |
|------|--------|
| [mm] | [mm] |
| 30 | 40.5 |

► Technical Data

| Order no. | Holding force max. | Weight |
|------------------|--------------------|--------|
| | [N] | [kg] |
| HEM1030NC | 40 | 0.09 |

Installation Size: **HEM1042**



► Dimension

| Ø | Height |
|------|--------|
| [mm] | [mm] |
| 42 | 45.5 |

► Technical Data

| Order no. | Holding force max. | Weight |
|------------------|--------------------|--------|
| | [N] | [kg] |
| HEM1042NC | 160 | 0.28 |

Installation Size: **HEM1062**



► Dimension

| Ø | Height |
|------|--------|
| [mm] | [mm] |
| 62 | 53 |

► Technical Data

| Order no. | Holding force max. | Weight |
|------------------|--------------------|--------|
| | [N] | [kg] |
| HEM1062NC | 420 | 0.66 |

Installation Size: **HEM1080**



► Dimension

| Ø | Height |
|------|--------|
| [mm] | [mm] |
| 80 | 69.5 |

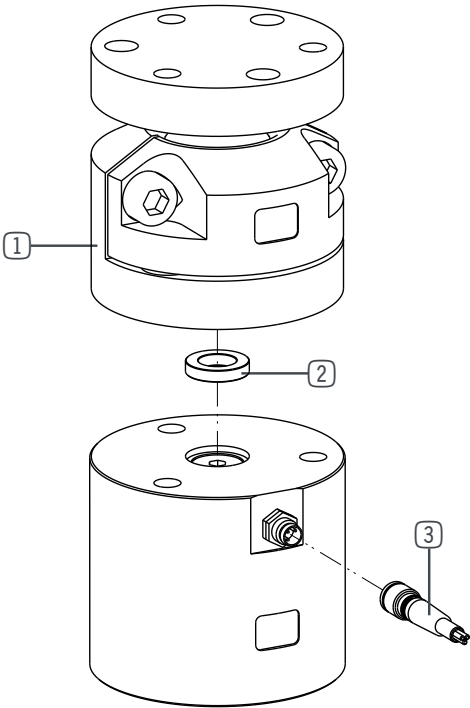
► Technical Data

| Order no. | Holding force max. | Weight |
|------------------|--------------------|--------|
| | [N] | [kg] |
| HEM1080NC | 720 | 1.3 |

GRIPPERS FOR SPECIFIC TASKS

SERIES HEM1000

► ACCESSORIES



► Installation Size: **HEM1030**

| Pos. | Accessories | Order no. |
|------|---|-----------------|
| ② | Centering Disc | ZE10H7X6 |
| ③ | Plug-in connector Straight Cable 5m - Socket M8 (female) | KAG500 |
| ③ | Plug-in connector Angled Cable 5m - Socket M8 (female) | KAW500 |
| | Plug-in connector customizable Straight - Connector M8 | S8-G-3 |

► Installation Size: **HEM1042**

| Pos. | Accessories | Order no. |
|------|---|-----------------|
| ① | Ball Joints | KG40 |
| ② | Centering Disc | ZE10H7X6 |
| ③ | Plug-in connector Straight Cable 5m - Socket M8 (female) | KAG500 |
| ③ | Plug-in connector Angled Cable 5m - Socket M8 (female) | KAW500 |
| | Plug-in connector customizable Straight - Connector M8 | S8-G-3 |
| | Plug-in Connector Customizable Angled - Connector M8 | S8-W-3 |

► Installation Size: **HEM1062**

| Pos. | Accessories | Order no. |
|------|---|-----------------|
| ① | Ball Joints | KG60 |
| ② | Centering Disc | ZE10H7X6 |
| ③ | Plug-in connector Straight Cable 5m - Socket M8 (female) | KAG500 |
| ③ | Plug-in connector Angled Cable 5m - Socket M8 (female) | KAW500 |
| | Plug-in connector customizable Straight - Connector M8 | S8-G-3 |
| | Plug-in Connector Customizable Angled - Connector M8 | S8-W-3 |

► Installation Size: **HEM1080**

| Pos. | Accessories | Order no. |
|------|---|-----------------|
| ① | Ball Joints | KG80 |
| ② | Centering Disc | ZE10H7X6 |
| ③ | Plug-in connector Straight Cable 5m - Socket M8 (female) | KAG500 |
| ③ | Plug-in connector Angled Cable 5m - Socket M8 (female) | KAW500 |
| | Plug-in connector customizable Straight - Connector M8 | S8-G-3 |
| | Plug-in Connector Customizable Angled - Connector M8 | S8-W-3 |